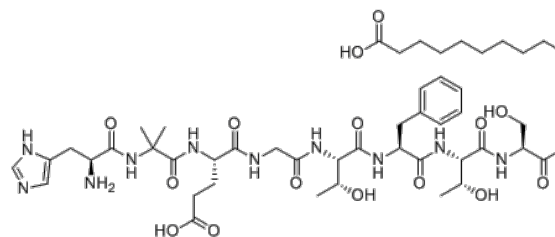


Product Name : Semaglutide
Cat. No. : PC-73177
CAS No. : 910463-68-2
Molecular Formula : C₁₈₇H₂₉₁N₄₅O₅₉
Molecular Weight : 4113.64
Target : Glucagon Receptor
Solubility : 10 mM in DMSO
1. Kapitza C, et al. J Clin Pharmacol. 2015 May;55(5):497-504.



Biological Activity

Semaglutide (NN 9535) is a glucagon-like peptide-1 (**GLP-1**) peptide agonist with binding IC₅₀ of 0.38 nM, increases insulin secretion and sugar metabolism.

Semaglutide also appears to enhance growth of β cells in the pancreas, which are the sites of insulin production.

Semaglutide inhibits glucagon, which is a hormone that increases blood sugar.

Semaglutide reduces food intake by lowering appetite and slows down digestion.

Semaglutide is a polypeptide that contains a linear sequence of 31 amino acids joined together by peptide linkages.

Amino acid sequence: HXEGTFTSDV SSYLEGQAAK EFIAWLVRGR G.

References

2. Monami M, et al. Exp Diabetes Res. 2012;2012:672658.
3. Gotfredsen CF, et al. Diabetes. 2014 Jul;63(7):2486-97.
4. Lau J, et al. J Med Chem. 2015 Sep 24;58(18):7370-80.

Caution: Product has not been fully validated for medical applications. Lab Use Only!

E-mail: tech@probechem.com